

*The Memory*





# The Memory

*Published by the Students*

*of*

*Jakin High School*

*Jakin, Georgia*

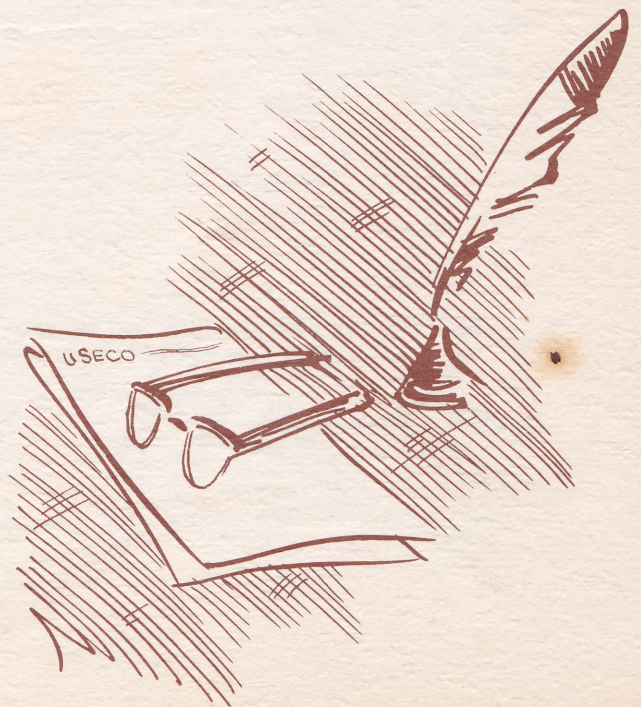
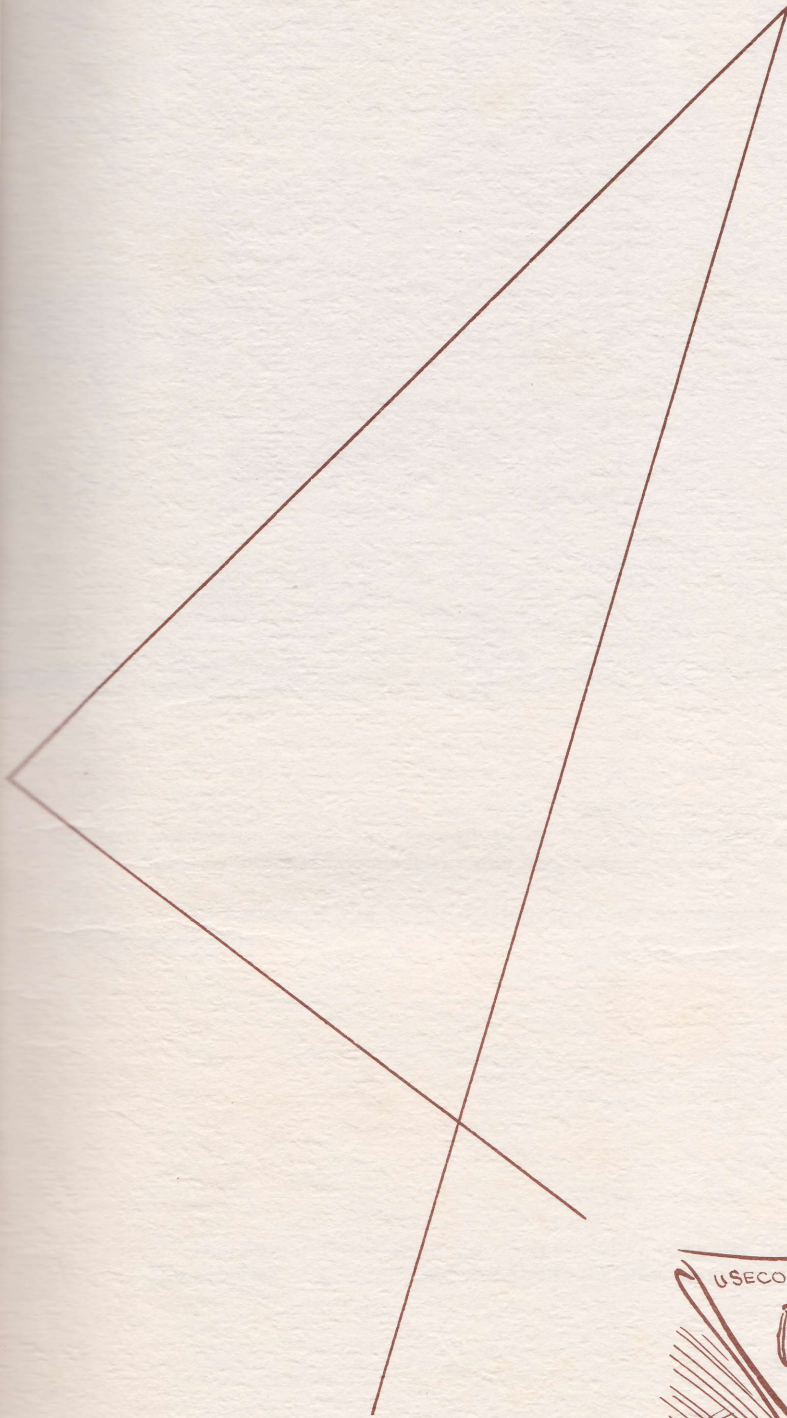




## *Dedication*

We, the seniors of 1953-54, dedicate our annual to Mrs. Dola Mae Evans (left) and Miss Willie Mosely (right) in appreciation for the many things which they have done for us and our school.

# Administration





Mr. C. L. Brooks

To you, Mr. Brooks, we wish to express our sincere thanks and appreciation for the inspiration which you have given us. Your untiring efforts and guidance have been a great help to the students of Jakin and people of the community.

In behalf of the entire student body we sincerely say that you have earned a place in our hearts.

Senior Class

The Senior Class is to be congratulated upon its fine work and spirit of cooperation. The progress of Georgia and the South depends upon you who are graduating.

*C. L. Brooks, Prin.*



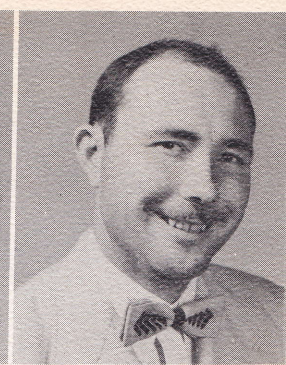
TONY A. WILLIAMS  
Voc. Ag. A.B.A.C.  
B.A. Univ. of Ga.



DOLA MAE EVANS  
B.S., G.S.C.W.  
Math and English



CATHERINE WARD  
B.S. in Home  
Economics  
Bessie Tift College



LLOYD W. BRADDY  
B.S., G.T.C.  
Phy. Ed., History



VESTA MINTER  
4 yr. College,  
F.S.U.  
Elementary Ed.



C. L. BROOKS,  
Principal  
B.S., E. Tenn. State  
M. A., U. of Ala.  
Phy. Ed. and School  
Administration.



ANGELA P. BRADDY  
B.S. Business Adm.  
Camaguey, Cuba,  
G.T.C.



ELIZABETH M.  
MOSELY  
G.S.C.W.,  
Elementary Ed.

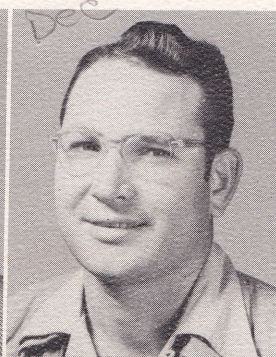
## Faculty



FRANCES HALL  
G.S.C.W., Elementary  
Ed.



DORIS WILLIAMS  
B. S., U. of Ala.  
Elementary Ed.



SIBYL BOSTWICK  
G.T.C., Elementary  
Ed.

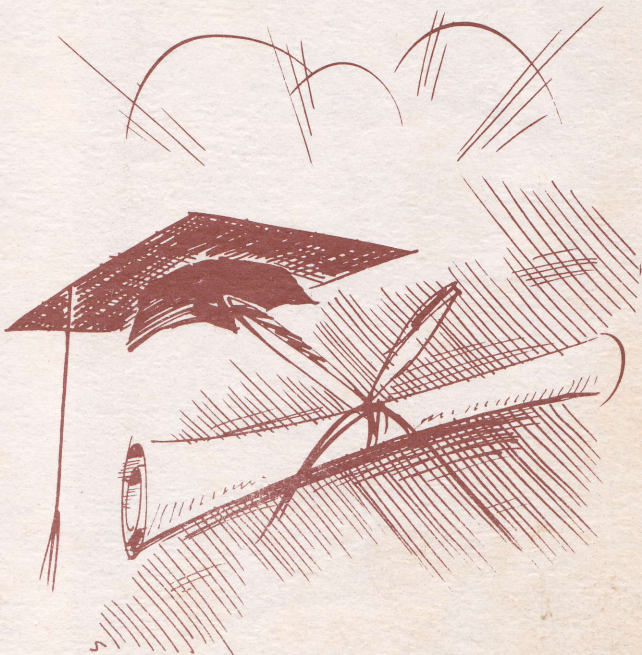


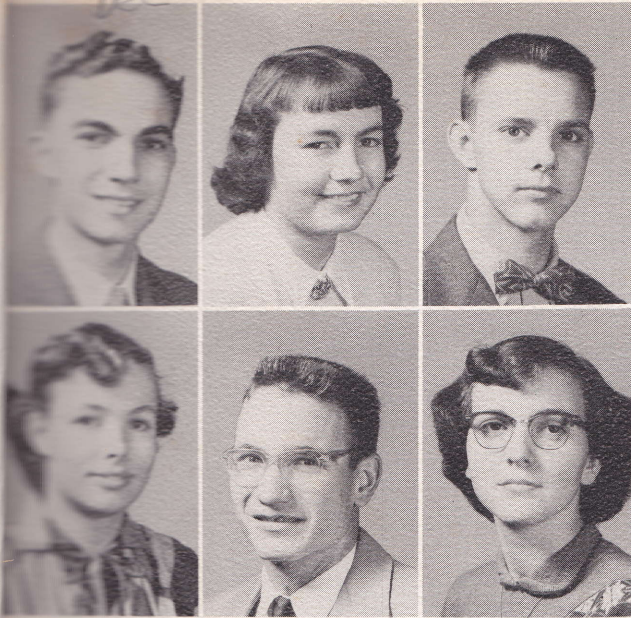
VIRGINIA BROOKS  
E. Tenn. State  
English



WILLIE MOSLEY  
Univ. of Ga.,  
G.S.C.W., 4 yr.  
College, Elementary  
Ed.

Seniors





BUCKY WARD - Most Talented; Art Editor of Paper; Art Editor of Annual. Clubs: F.F.A.; Dramatics.

EDNA SUE HILL - Most Intellectual; Class Editor of Annual. Clubs: Book Club-President; Glee Club; Dramatic Club; Basketball-Manager; Beta-Reporter.

BOBBY CANNON - Most Handsome, Assistant Sports Editor of Annual. Clubs: F.F.A.-Treasurer; Dramatic Club; Glee Club; Basketball; Baseball; Track.

SHIRLEY BROWN - Assistant Business Manager of Annual; Social Editor of Paper. Clubs: Glee Club; Beta Club; Dramatic Club; Book Club.

WATSON MILLER - Assistant Class Editor of Annual. Clubs: Glee Club; Dramatic Club; Basketball; Baseball; Beta; Track; F.F.A.-Vice-President.

DORIS PACE - Girl Most Likely to Succeed; Friendliest Girl; Most Athletic Girl; Best All Around Girl; Best Personality; Editor-in-Chief of Annual; Editor-in-Chief of Paper; Class Reporter. Clubs: Beta Club-President; Dramatic Club; Glee Club President; Basketball; F.H.A.-Historian; Student Council-Vice-President.



JERRY PEARCE - Class President; Business Manager of Annual. Clubs: F.F.A.-President; Dramatic Club; Glee Club; Beta Club-Secretary; Basketball; Baseball; Track.

JACK SUTTON - Loudest; Class Vice-President; Sports Editor of Annual; Sports Editor of Paper. Clubs: Dramatic Club; Glee Club-Reporter; Baseball; Basketball; Track; Beta; F.F.A.

ROBBIN REEVES - Most Intellectual; Wittiest; Most Likely to Succeed; Best Personality; Assistant Editor of Annual; Typist of Paper Staff; Joke Editor of Paper; Sec. & Treas. of Senior Class Clubs: F. F. A.-Reporter; Dramatic Club; Glee Club; Beta Club; Basketball-Manager; Baseball; Student Council-President.

JIMMY JAMES - Most Athletic; Best All Around; Assistant Typist of Annual; Circulation Manager of Paper. Clubs: Dramatic Club-President; Basketball; F. F. A.; Baseball; Track; Glee Club.

CONNIE MAY - Most Talented; Typist of Annual; Typist of Paper. Clubs: Beta Club; Dramatic Club; Glee Club; F.H.A. Book Club.

MARSHALL WILLIAMS - Assistant Activity Editor of Annual; Clubs: Glee Club; Basketball; Baseball; Track; F.F.A.; Dramatic Club.

BESSIE MAE PARR - Gossip Editor of Paper; Assistant Art and Picture Editor of Annual. Clubs: Glee Club; Dramatic Club; Book Club, F.H.A.

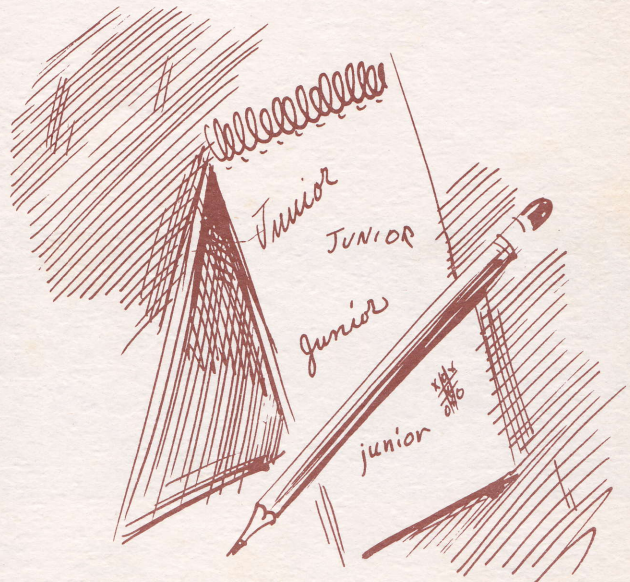
NATHAN ARNOLD - Most Bashful Boy; Quietist Boy; Photographer of Annual. Clubs: F.F.A.; Dramatic Club; Baseball.

JOYCE GLASS - Activity Editor of Annual. Clubs: Book Club; Glee Club; Dramatic Club-Sec. & Treas.; Beta Club; F.H.A.





*Junior*

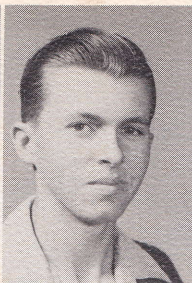




Evelyn O'Hearn  
Most attractive  
girl,  
Beta Club  
Glee Club  
F.H.A.  
Dramatics Club  
Basketball



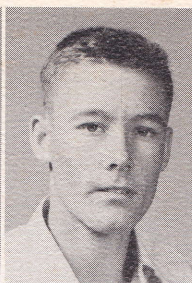
Mary Hudson  
Beta Club  
Book Club  
Dramatics Club  
F.H.A.  
Glee Club



Wayne  
Buckhalter  
F.F.A.



Lessie Young



Deward Harper  
Glee Club  
F.F.A.  
Basketball



Vivian Hill  
Beta Club  
Book Club  
Glee Club



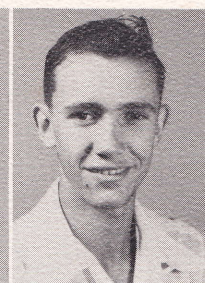
Allene McArdle  
Beta Club  
Book Club  
Dramatics Club  
F.H.A.



Junior Cannon  
Glee Club  
Dramatics Club  
F.F.A.  
Basketball



Betty  
Murkerson  
Beta Club  
Glee Club  
F.H.A.  
Basketball



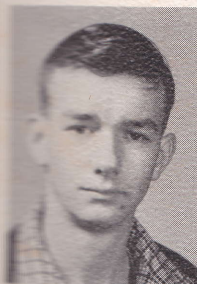
Roy McMullen  
Glee Club  
F.F.A.  
Dramatics Club  
Book Club  
Basketball



Delma McMullen  
F.H.A.  
Beta Club  
Basketball



Clara Jean  
Phillips



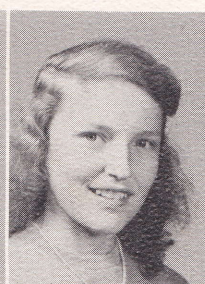
Mac Tedder  
Glee Club  
F.F.A.



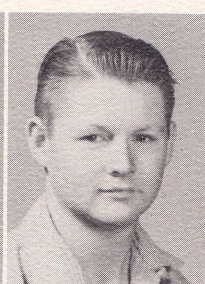
Pat Edwards  
Glee Club  
F.H.A.  
Dramatics Club  
Beta Club  
Loudest Girl  
Wittiest Girl  
Basketball



Hiram O'Hearn  
F.F.A.  
Glee Club  
DEC



Patricia  
Dupriest

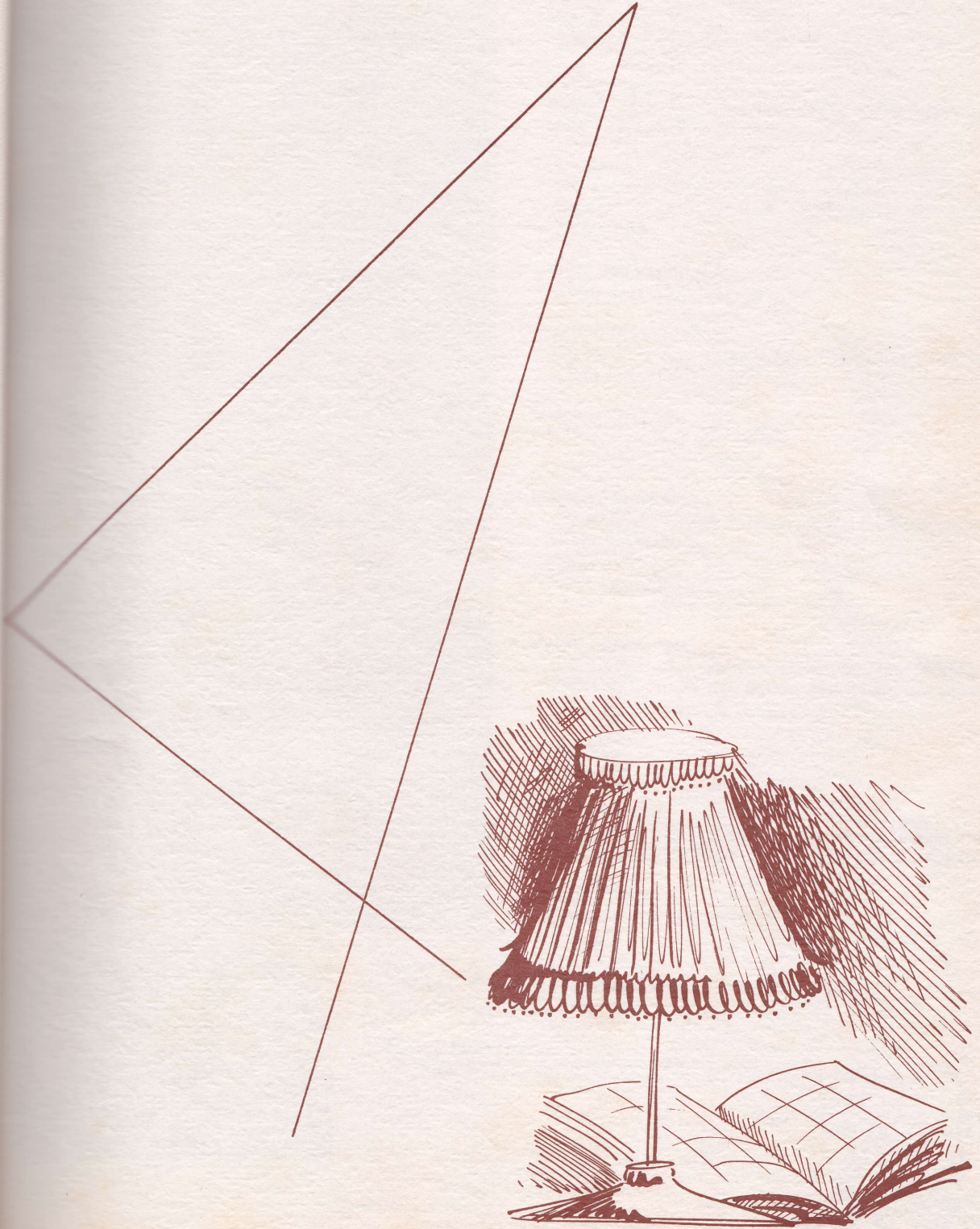


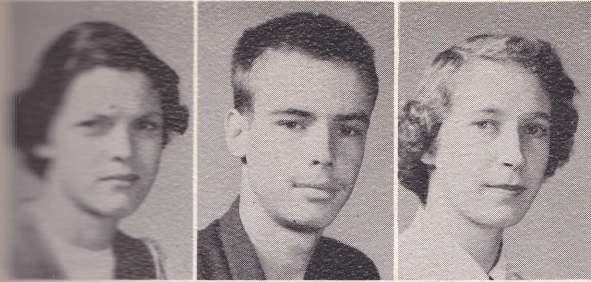
Pete Hudson  
F.F.A.



Edna Earle  
Newberry  
F.H.A.  
Glee Club  
Book Club

Sophomores





**Marcine Barnett**  
Treasurer of Sophomore Class. Clubs: F.H.A.; Glee Club; Basketball.

**Ivey Hill**  
Clubs: F.F.A.; Basketball; Glee Club.

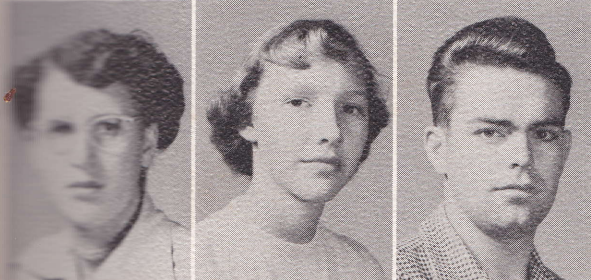
**Pat Tolar**  
Clubs: Book Club; Glee Club; Dramatics Club; Beta Club; F.H.A.-Parliamentarian.



**Thomas Long**  
Clubs: F.F.A.; Glee Club.

**Glenda Ward**  
Clubs: F.H.A.-Vice-President; Glee Club; Dramatics Club; Basketball.

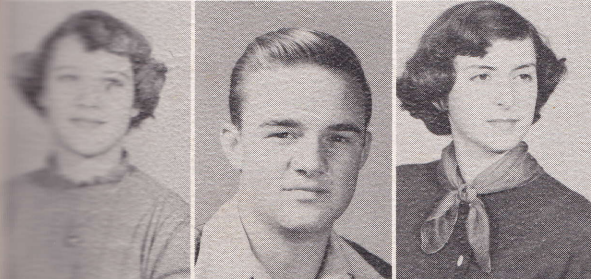
**Ann James**  
Sophomore Class President. Clubs: F.H.A.-Song Leader; Dramatics Club; Basketball; Glee Club; Beta Club.



**Shelby Jean Lanton**  
Club: 4-H Club-Sec. & Treas.

**Virginia McMullen**  
Clubs: F.H.A.; Glee Club; Dramatics Club; Beta Club; Basketball.

**Rudolph Williams**  
Clubs: F.F.A.; Glee Club.



**Marjorie Brooks**  
Cutest Girl. Clubs: F.H.A.; Glee Club; Dramatics Club; Basketball.

**Freddie Lomineck**  
Clubs: Glee Club; F.F.A.

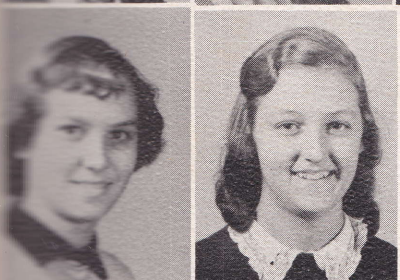
**Myrna Bruner**  
Clubs: F.H.A.; Dramatics Club-Vice-President; Book Club; Glee Club; Basketball; Beta Club; County 4-H Council Sec. & Treas.



**Robert Frith**  
Club: F.F.A.

**Patricia Bowen**  
Neatest Girl; Clubs: F.H.A.-Secretary; Glee Club; Dramatics Club; Beta Club; Basketball; Book Club.

**Margaret Frith**  
Clubs: F.H.A.; Basketball.

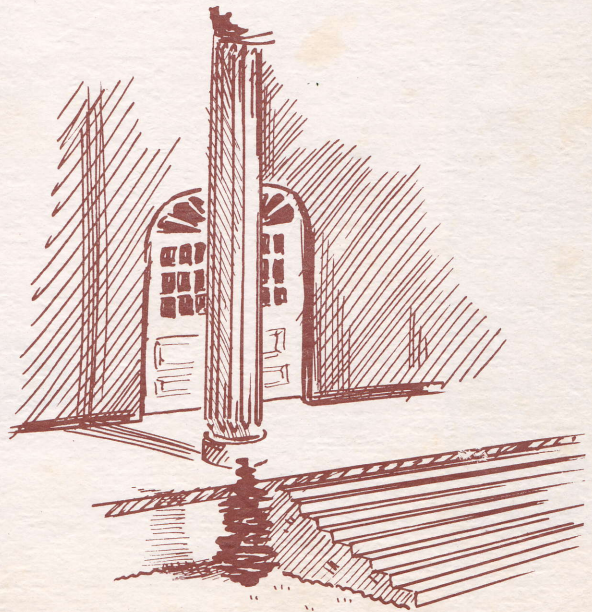


**Naomi Cannon**  
Clubs: F.H.A.-Treasurer; Glee Club; Beta Club; Dramatics Club; Book Club.

**Eunice Murkerson**  
Clubs: Beta Club; Glee Club; Book Club.



Freshmen





Jane Ellen Reese  
F.H.A.  
Basketball  
Glee Club

# Freshmen



Callie Sue Long  
Glee Club  
F.H.A.



Lang Houston  
Glee Club  
Basketball  
F.F.A.



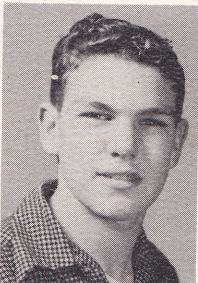
Hazel Cannon  
F.H.A.  
Glee Club  
Book Club  
Class Treasurer



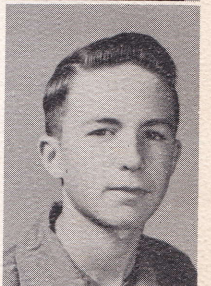
Johnny Miller  
Glee Club  
F.H.A.



Kenneth George  
Glee Club  
F.F.A.



Jake Cannon  
F.F.A.  
Glee Club  
Dramatics Club  
Basketball  
Class Secretary

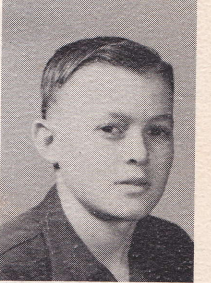


Jackie Frith  
Glee Club  
F.F.A.  
Basketball  
President of Class



*Dec*  
Raymond Miller  
F.F.A.  
Glee Club  
Basketball  
Class Reporter

Bill Mann  
Glee Club  
F.F.A.  
Vice-President of Class



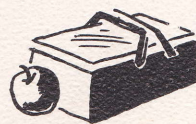
Philip Buckholter  
Glee Club  
F.F.A.



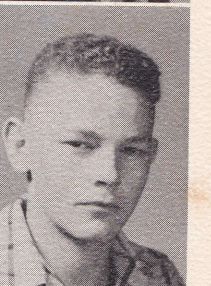
Benny Roberts  
Glee Club  
F.F.A.



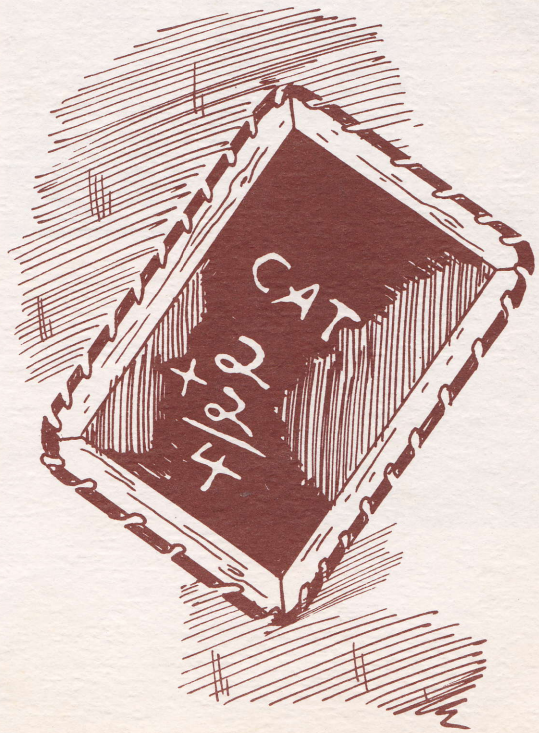
Larry Edwards  
Glee Club  
F.F.A.



*Dec*  
Kalon Knight  
Glee Club  
F.F.A.  
Basketball



Grades



# 8th Grade

Walter Arnold  
Jr. Basketball, F.H.A.

Allen Brooks  
Jr. Basketball, F.F.A.

Wesley Griffith  
Jr. Basketball, F.F.A.

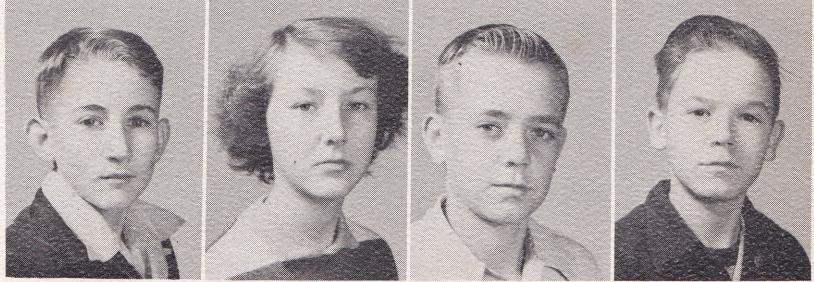
Marie Love  
Jr. Basketball, F.H.A., Treas. of Class.

Allen Dunning  
Jr. Basketball, F.F.A., Class Vice-Pres.

Wesley Cozum  
Jr. Basketball, F.H.A., Class Sec.

Frank Miller  
Jr. Basketball, F.F.A.

Walter  
F.F.A.



Ottis Chandler  
Jr. Basketball, F.F.A.

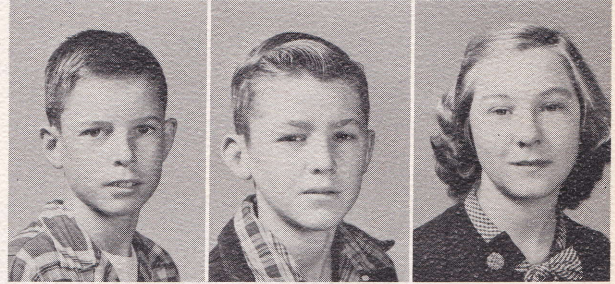
Wayne Tucker  
Jr. Basketball, F.F.A.

Irene McLendon  
F.H.A., Class Reporter

Robert Young  
F.F.A.

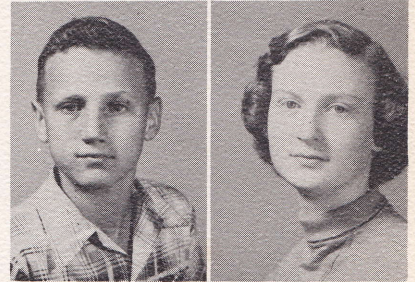
June Creel  
F.H.A.

Shelton Bruner  
Jr. Basketball, F.F.A., Pres. of Class.



Frank Miller  
Jr. Basketball, F.F.A., Class Reporter.

Charlotte Herrington  
Jr. Basketball, F.H.A.



Mrs. Charity Bricken  
B.M., Alabama College, Montivello,  
Ala. Studied in David Mannes., N.Y.  
and Huntington College.





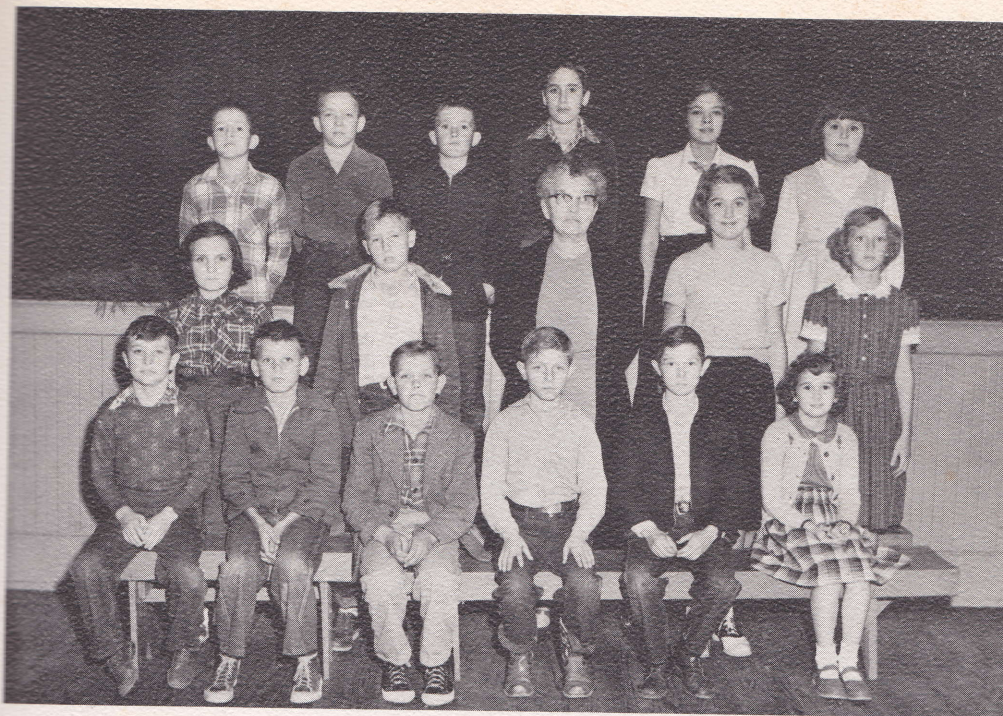
## *7th Grade*

TOP ROW: Left to Right, Minnie Pearl Lanton, Mrs. John Hall, Mary Alice Widner. SECOND ROW: Annie Carol Long, Jannette Hill, Annette Hill, Bob Pace, Jacob Reese, Roscoe Reese, Carol Williams, Barbara Love. SEATED: Left to Right, Ronald Bruner, Hilda Creel, Faye Glass, Wilma Love, Tina Cannon, Marie Hayes, Faye Houston, Glenda Lanton, Will Layton.



## *6th Grade*

STANDING: Left to Right, Charles Lanton, Joe Hudson, Elaine Hill, Mrs. Elizabeth Mosely, Donald Lomineck, Virlyn Buckhalter, Arthur Murkerson, Jimmy Lanton. SEATED: Left to Right, Sally Brooks, Hilda McMullen, Brenda George, Linda Love, Ann Davis, Faye Cannon.



### *5th Grade*

TOP ROW: Left to Right, Jack Pace, Julian Houston, Benny Williams, Earl Love, Vonnell Barnett, Linda Hudson. SECOND ROW: JoAnn Passmore, Dick Howard, Miss Vesta Minter, Johnnie Brooks, Patricia Reese. SEATED: Jackie Thornton, Jimmy Miller, Rabon Miller, Mack Harvey, Robert McLendon, Marie Dunning.



### *4th Grade*

TOP ROW: Left to Right, Larry Frith, W. L. Widner, Jimmie McMullen. SECOND ROW: Mrs. Doris Williams, Ray Love, Ted Helms, John Wayne Chandler, Gaynor Tedder, Larry Spann, Donnie Mae Oder, Eunice Lanton, Natacha Tucker. SEATED: Nell Helms, Eddie Revells, William Knight, Jerry Miller, Ashley Roberts, Jeanette Layton, Rebecca Miller.



### *3rd Grade*

TOP ROW: Left to Right, Mrs. Sibyl Bostwick, Eloise Lanton, Carl Young, Patsy Long, William Murkerson, Beverly Gruber, Lamar Arnold, Annette Layton. FRONT ROW: Patricia Harvey, Ben Fuller, Eva Nell Love, Wallace Lanton, Betty Wright, Jimmy Doster, Pat George, Arthur Glass.



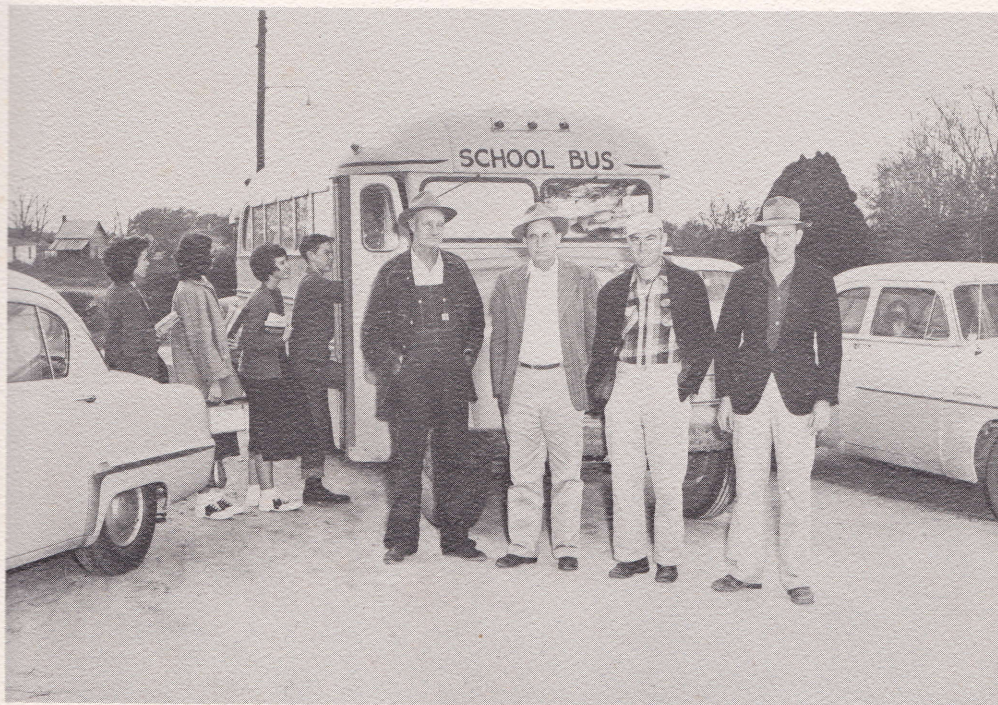
### *2nd Grade*

TOP ROW: Left to Right, Jerry Toole, Ralph Fleming, George Love, Tommy Lomineck, John Mosley, Mrs. C. L. Brooks. SECOND ROW: Benny Hayes, Tommy McMullen, Gerald Miller, Wayne Love, Gary McArdle, Betty Hayes. FIRST ROW: Don Murkerson, Beverly Tolar, Linda Sue Fleming, Lucy Pearl Oder, Jeannie Lee, Joyce Helms, Evelene Hunt, Carrol Lanton.



## *1st Grade*

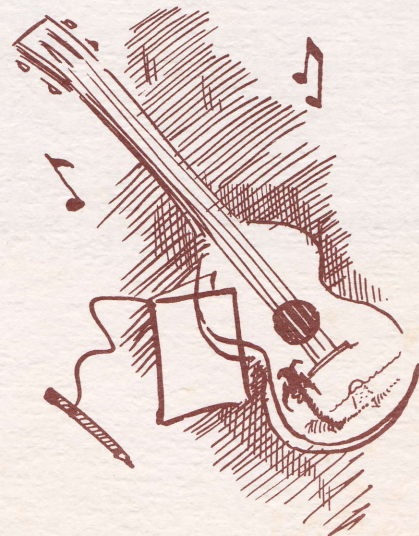
TOP ROW: Left to Right, Thomas Hudson, Jerry Houston, Sue Reese, Kay Flemming, James Love, Walter Reese, Mrs. Willie Mosely. SECOND ROW: Herman Layton, Don Love, Ted Lanton, David Pearce, Richard Kelly. SEATED: Mary Revells, Clara Passmore, June George, Mary Helen Edwards, Marilyn Williams, Glenn Thornton.



## *Bus Drivers*

Left to Right: Mr. Earnest Reese, Mr. Gordon Tolar, Mr. Ira Reese, Mr. Bryon Bruner.

# Activities



# Who's Who





Scenes from Senior Play - "Wanted, A Hero."



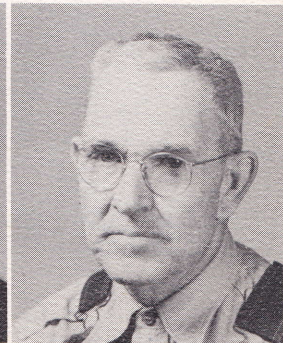
Mrs. Clarence Tedder  
Supervisor



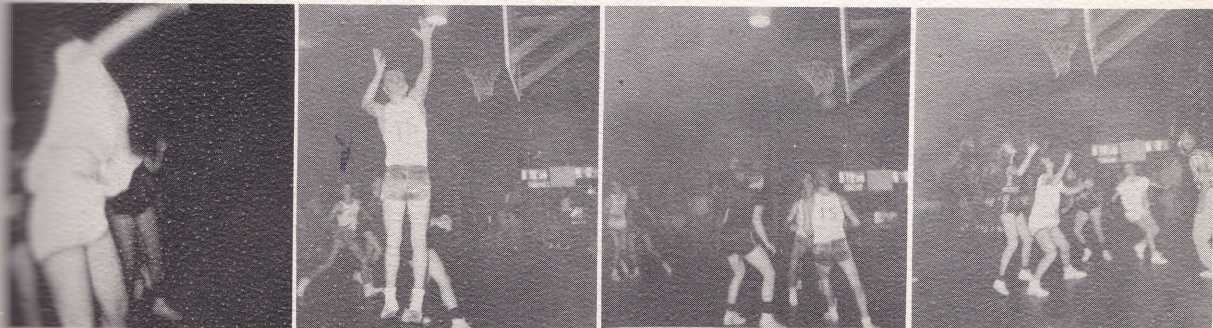
Mrs. Mayse Sutton



Mrs. Joe Cannon  
Whom do we meet at lunch?



Mr. Joe Cannon  
Custodian



At Games



### *4-H Club*

Officers: Myrna Bruner, President; Faye Houston, Vice-President; Shelby Jean Lanton, Secretary and Treasurer; Sally Brooks, Reporter; Myrna Bruner, Song Leader.



### *Halloween Carnival*



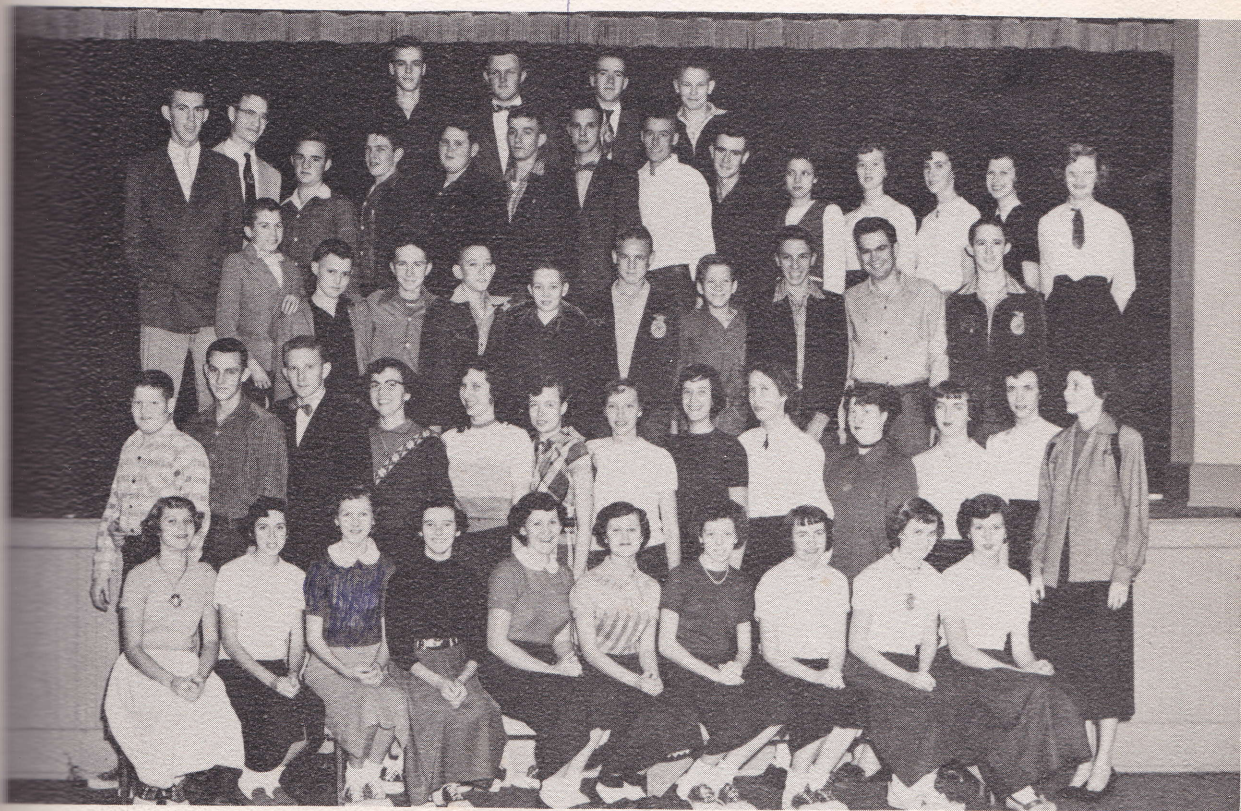




## Book Club

President.....Edna Sue Hill

Secretary & Treasurer.....Vivian Hill



## Glee Club

President.....Doris Pace

Vice-President.....Pat Edwards

Secretary & Treasurer.....Evelyn O'Hearn

# F. H. A. Officers



President.....Pat Edwards  
 Vice-President.....Betty Murkerson  
 Secretary.....Patricia Bowen  
 Treasurer.....Naomi Cannon

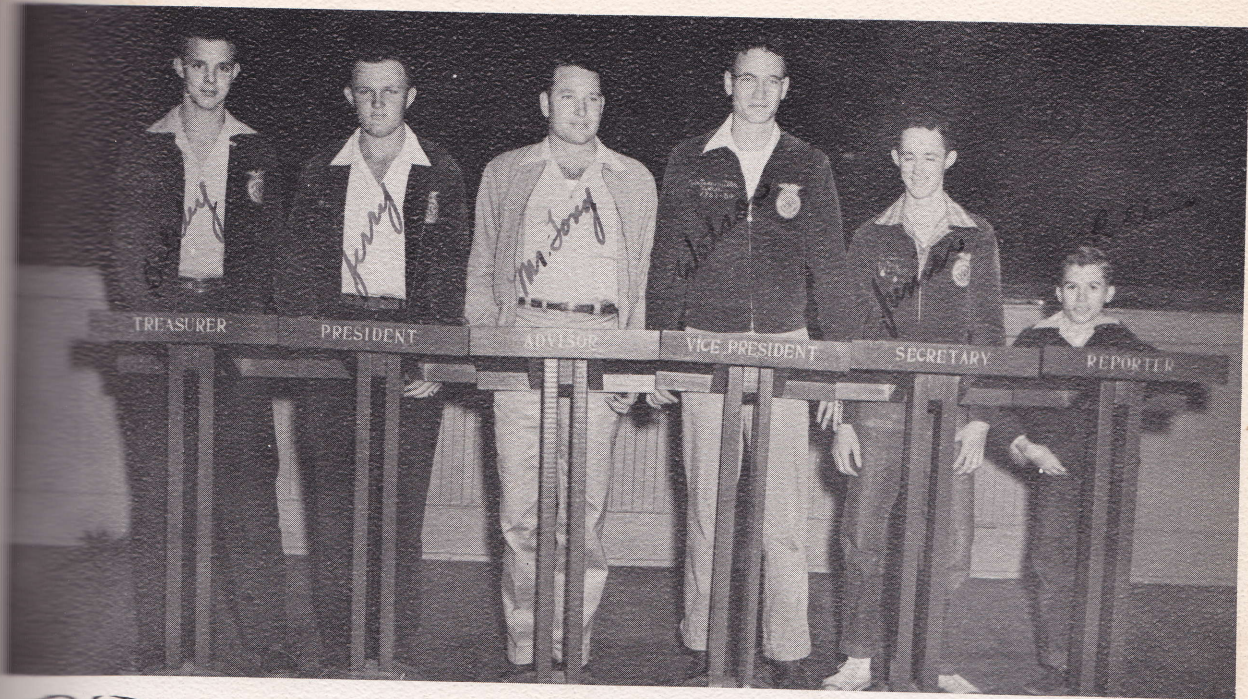
Reporter.....Allene McArdle  
 Parliamentarian.....Pat Tolar  
 Historian.....Doris Pace  
 Advisor.....Mrs. Tommy Ward



# F. H. A.

3013

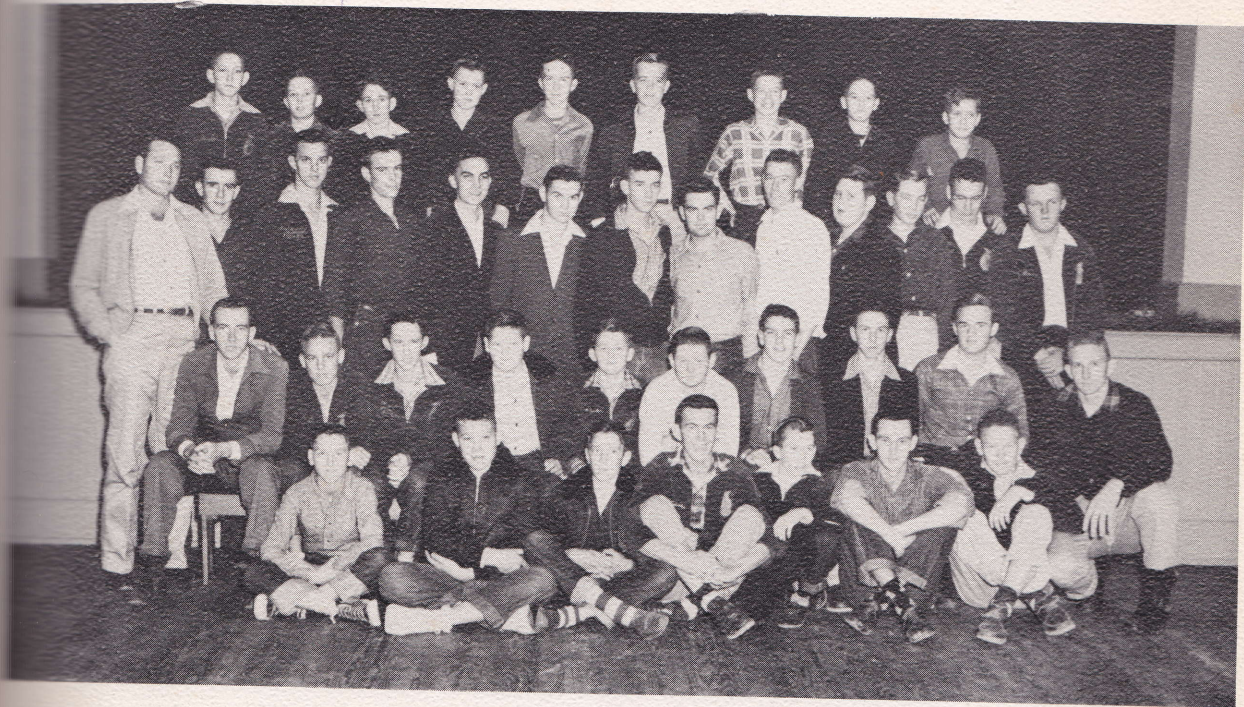
# F. F. A. Officers



Left to Right: Bobby Cannon, Jerry Pearce, Mr. Tony A. Williams, Watson Miller, Junior Cannon, Robbin Reeves.



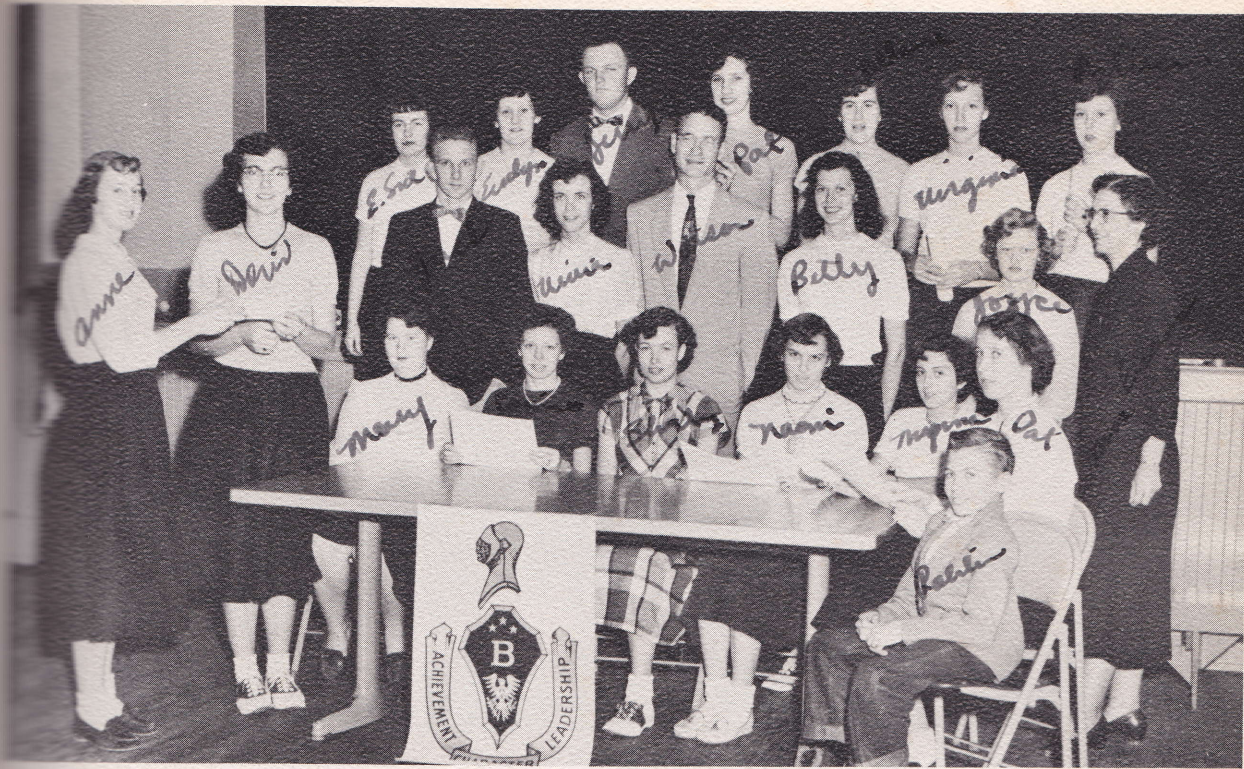
*Bobby*



# F. F. A.



## Beta Club



President.....Doris Pace  
 Vice-President.....Allene McArdle

Secretary-Treasurer.....Jerry Pearce  
 Reporter.....Edna Sue Hill

## Dramatics Club



President.....Jimmy James

Secretary-Treasurer.....Joyce Glass

# Annual Staff

*X Bob*



SEATED: Connie May, Typist; Robbin Reeves, Asst. Editor; Joyce Glass, Activity Editor; Doris Pace, Editor; Shirley Brown, Asst. Business Manager; Bessie Parr, Asst. Art Editor; Edna Sue Hill, Class Editor.  
 STANDING: Jerry Pierce, Business Manager; Jimmy James, Typist; Bucky Ward, Art Editor; Jack Sutton, Sports Editor; Bobby Cannon, Asst. Sports Editor; Watson Miller, Asst. Class Editor; Marshall Williams, Asst. Activity Editor; Nathan Arnold, Photographer.

# Paper Club



SEATED: Patsy Edwards, Asst. Joke Editor; Allene McArdle, Asst. Editor; Betty Murkerson, Asst. Business Manager; Bessie Parr, Gossip Editor. STANDING: Mrs. Evans, Sponsor; Bucky Ward, Art Editor; Robbin Reeves, Joke Editor; Jimmy James, Circulating Mgr.; Evelyn O'Hearn, Asst. Sports Editor; Jack Sutton, Sports Editor; Doris Pace, Editor; Watson Miller, News Reporter; Deward Harper, Asst. Gossip Editor; Shirley Brown, Social Editor; Connie May, Typist; Vivian Hill, News Reporter; Edna Sue Hill, Typist.

## *Class Prophecy*

As I gaze into Madam Zooler's crystal ball I see our class in the future. Many things are revealed unto me about the class of '54. They seem to be doing well in the business world. I find some of my classmates in Atlanta, Georgia. Edna Sue Hill is going to the University of Georgia Division and also has a part-time secretarial job. Shirley Brown has married a well-known doctor in Atlanta. Bessie Parr and her husband own a house in Atlanta, Georgia. She does secretarial work also.

The ball reveals to me that Joyce Glass is a secretary for a lawyer in Albany, Georgia. I also see where Jimmy James is a Master Sergeant in the Air force and is stationed in Albany.

Next, traveling to Athens, Georgia, I see two familiar faces, Jerry Pearce and Robbin Reeves. They are both attending school at the University of Georgia. Jerry is very much absorbed in his work. He is studying to be a veterinarian. He is to be married soon. Robbin is very popular due to his intelligence. He is planning to be an accountant.

Madam Zooler's ball also shows that other members of the class are doing well in Florida. In Jacksonville I find Nathan Arnold as an assistant manager of a large Jitney Jungle store. Bucky Ward appears next. He is an undertaker and does oil painting as a hobby. Marshall Williams owns a thriving business. He owns a truck line operating from Jacksonville.

In Panama City, Florida Jack Sutton is working with the GMAC, as a field representative. I see a large Ford Tractor Company. The owner is none other than Watson Miller. Stationed at Tyndal Field is Bobby Cannon who is in the Air Force. Bobby is married now and has a little girl.

Augusta, Georgia is the place where I see myself (Doris Pace), as a nurse at the University Hospital.

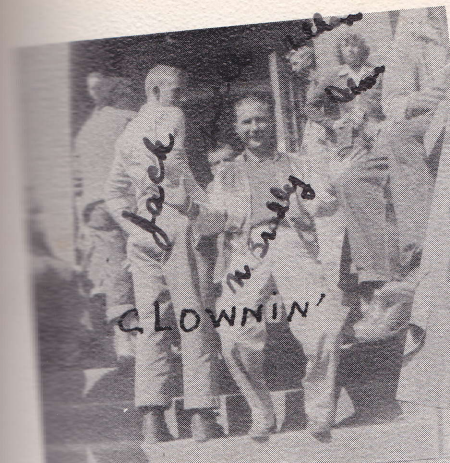
Faithful in Jakin we find Connie Riley who is a housewife and music teacher.

This is the future as it is revealed in the crystal ball. I hope there will be much happiness and success in store for my classmates in the fields mentioned here.

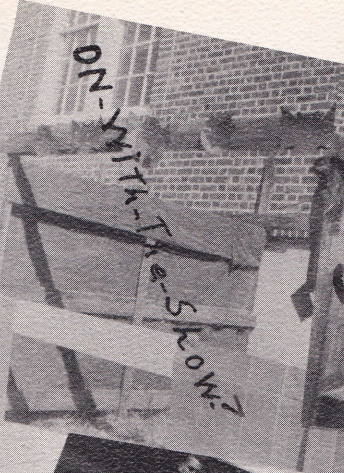
Doris Pace

*Doris Pace*

# Snapshots



face  
in belly  
CLOWNING



ON WITH THE SHOW



Wow! wow!



Backs



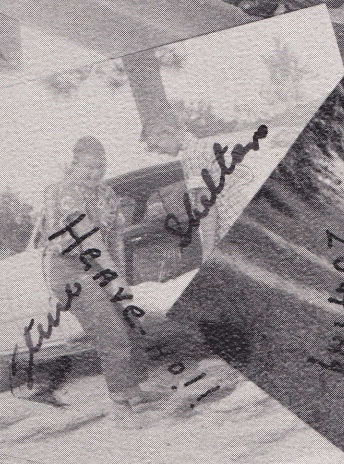
King



me



Home



Heave Ho!



foot



Ready

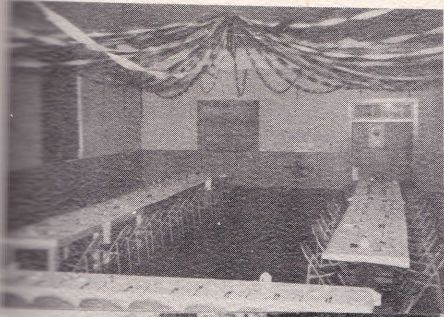


See The Show



Picnicking

# Snapshots





# *Last Will and Testament*

We, the Senior Class of 1954, of Jakin High School, being of sound mind (?) do hereby make this our last will and testament.

To the Freshman Class we leave our deepest sympathy and our sincere hope for a successful future.

To the faculty we leave our "anticipation of a maximum capacity attendance next year."

I, Bucky Ward, will all the art work at Jakin to Wayne Buckhalter.

I, Connie Riley, will my music to Evelyn O'Hearn, who will do fine if she can stay on key.

I, Nathan Arnold, will my quietness to Pat Edwards.

I, Doris Pace, will my big feet and ball suit to Mrs. Evans.

I, Jack Sutton, will my loudness to Robert Frith.

I, Joyce Glass, will my love for books to Deward Harper.

I, Jimmy James, will my ability to play ball to Pete Hudson.

I, Shirley Brown, will some of my many boy friends to the Junior girls.

I, Edna Sue Hill, will my small features to Mary Hudson.

I, Robbin Reeves, will my love for the teachers to Roy McMullen.

I, Marshall Williams, will my ability to stay out of school to Hiram O'Hearn.

I, Bessie Mae Parr, will my wavy hair to Mr. Braddy.

I, Bobby Cannon, will a few of my cute girl friends to Junior Cannon.

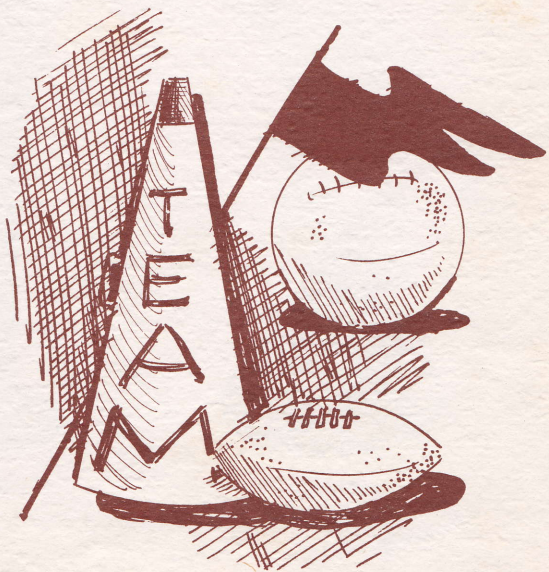
I, Jerry Pearce, will my ability to tell tall tales to Rudolph Williams.

I, Watson Miller, will my love for "food" to Larry Edwards.

## *Calendar*

September 7 — School Opened	February 16-19 — Girls' District Basketball Tournament
October 16 — FHA Initiation	February 23-26 — Boys' District Basketball Tournament
October 30 — Halloween Carnival	March 26 — Spring Festival
November 4 — Dixie Rhythm Quartet	April 1 — FFA-FHA Banquet
November 25 — FFA, FHA Fun Night	April 9-10 — Beta Club Convention District Literary Meet
November 27 — Thanksgiving	April 14 — Junior Play
November 30 — Presented Play at District Meet in Newton	May 11 — Junior Senior Banquet
December 18 — Christmas Holidays begin	May 23 — Baccalaureate Sermon
December 28 — Christmas Holidays end	May 27 — Commencement Exercises
January 20-22 — County Basketball Tournament	May 28 — School Closes

Sports



# Girls' Basketball



*"Pat"*

Pat Edwards



Doris Pace  
Captain

*Glossie*



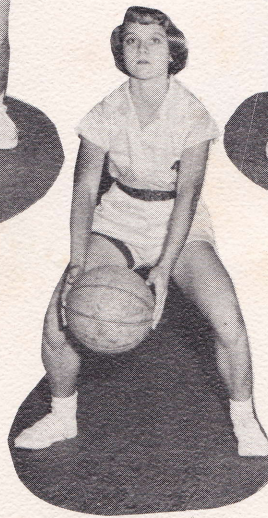
Betty Murkerson

*"Bet"*



Anne James

*"Anne"*



*"Marge"*  
Marjorie Brooks



Evelyn O'Hearn

*"Eve"*



C. L. Brooks  
Coach

*"Mr. C. L."*



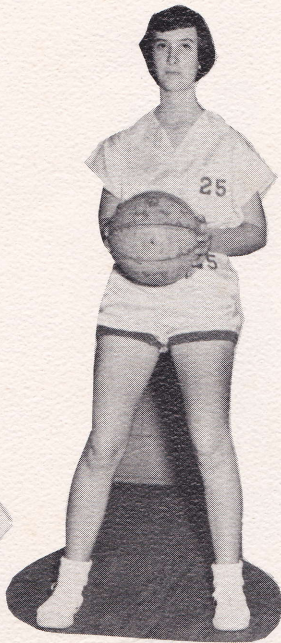
Virginia McMullen

*Virginia*

# Girls' Basketball



Patricia Bowen  
*"Patricia"*



*"Jane"*  
Jane Ellen Reese



*"Glenda"*  
Glenda Ward



*"Marcine"*  
Marcine Barnett



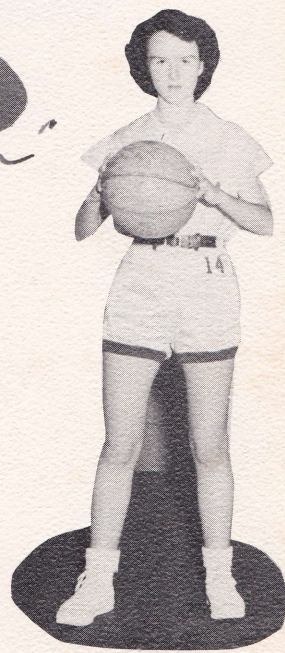
*"Myrna"*  
Myrna Brunner



Delma McMullen  
*"Delma Sue"*



Edna Sue Hill  
Manager  
*"Little Mountain"*



Margaret Frith  
*"Margaret"*

# Boys' Basketball



Kalon Knight  
"Fug"



Speedy  
Bobby Cannon



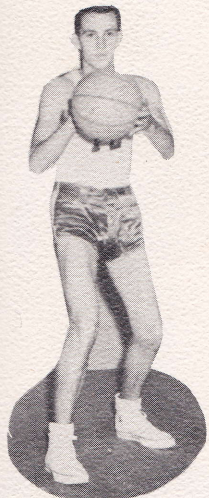
Jimmy James  
Captain  
"Merle"



"Burhead"  
Watson Miller



"Foots"  
Jack Sutton



Jake Cannon  
"Shoulders"



Lloyd Braddy  
Coach  
"Louie"



Marshall Williams  
"Muk"

# Boys' Basketball



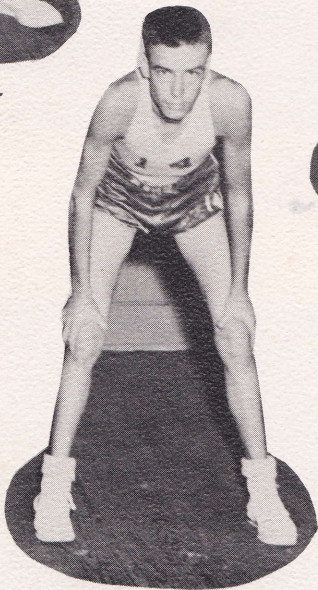
Gary  
Lang  
Houston



Jerry  
Pearce  
"Jessor"



Jackie  
Frith  
"Jack"



Ivy  
Hill  
"Loulli"



Deward  
Harper  
"Dee"



Raymond  
Miller  
"Ray"



"Willie"  
Robbin Reeves  
Manager



"Ju"  
Junior  
Cannon



*Cheerleaders*



*Track Team*



## Basketball

Date	Playing	Place	Home		Visitors	
			Boys	Boys	Girls	Girls
Nov. 4	Attapulugus	Attapulugus	54 - W	48	42	35
Nov. 5	Whigham	Whigham	39 - W	31	39	21
Nov. 10	W. Bainbridge	W. Bainbridge	57 - W	36	36	18
Nov. 13	Colquit	Colquit	45 - H	55	34	55
Nov. 20	Morgan	Morgan	61 - W	39	46	38
Nov. 24	Arlington	Arlington	56 - L	60	41	42
Dec. 3	Hilton	Hilton	45 - W	28	22	30
Dec. 5	Climax	Donalsonville	39 - H	41	49	42
Dec. 8	Cuthbert	Cuthbert	47 - H	68	40	27
Dec. 11	Damascus	Damascus	51 - L	69	44	34
Dec. 15	Whigham	Whigham	46 - L	31	41	40
Dec. 17	Blakely	Blakely	48 - W	24	33	32
Jan. 2	Colquit	Colquit	52 - H	58	30	44
Jan. 5	Hilton	Hilton	45 - W	35	42	43
Jan. 8	Damascus	Damascus	51 - L	52	42	43
Jan. 11	Blakely	Blakely	55 - W	45	29	23
Jan. 12	Attapulugus	Attapulugus	59 - L	69	50	35
Jan. 14	Newton	Newton				
Jan. 20 - 21 - 22		Damascus	Canceled			
Jan. 26	W. Bainbridge	W. Bainbridge	County Tournament			
Jan. 29	Deorum	Deorum	52 - W	31	42 - W	29
Feb. 2	Bainbridge	Donalsonville	56 - H	61	42 - W	31
Feb. 4	Newton	Newton	63 - W	50	37 - W	18
Feb. 9	Arlington	Arlington	82 - W	37	40 - H	43
Feb. 11	Edison	Blakely	67 - W	53	44 - L	51
Feb. 13	Climax	Climax	52 - L	81	49 - W	38
Feb. 15 - 18		Hilton	63 - W	47	41 - W	29
Feb. 22 - 25		Climax	Girls' District Tournament Boys' District Tournament			

Nov 14  
Jan 10

Nov - 16  
Jan - 9



# Advertising

